

How to attach the ImageRunner cable (MCIC1 & MCIC3) from an iR2200 to iR105 device

Short description of how to attach the cable and configure the devices

Version no: 1.03

Stand: September 14, 2004

Version:	1.03	
Date:	September 14, 2004	
First Draw-up Date:	August 24, 2004	
Author:	Andreas Jänchen	
Revision history:	Version:	Revision date:
	1.03	09.09.2004
Technologies concerned:	MIND V >2.10.37	
	MCIC1 & MCIC3 cable	
	iR 2200 up to 105	
	uniFLOW V > 2.0.206	
Reviewer:	Marja Pals	10.09.2004
File Name:	WP_MI_ConnectMCIC1	

Short Summary:

This document describes the following issues:

Preamble

1. Preparation of an iR device for the ImageRunner cable.
2. Attaching the ImageRunner cable to the iR device.
3. Software configurations
 - a. MIND Settings
 - b. Device Agent configuration with copy cost control
 - c. Device Agent configuration without copy cost control
4. Detaching the cable from the iR device

Appendix A: List of supported devices

Appendix B: Relevant Links for this document

Preamble

The information and technology in this whitepaper refer to the date it was written or revised. We do our best to keep the content as up to date as possible.

For correct ordering it is important to notice the difference between the MCIC1 and MCIC3 cable. The MCIC1 and MCIC3 are basically the same, but the MCIC3 additionally has a small adapter, which is necessary to connect to some of the colour machines of Canon. Before you place an order, please take a look at Appendix A of this document. If your project contains one of these machines, place your order according to your requirements.

1. Preparation of an iR device for the ImageRunner cable

Before you start to access the service mode, you have to set the System Manager ID with a password on the appropriate RUI. This is a preventive measure to access the machine after you have activated the card access mechanism.

First of all you have to enter the service-mode on the iR device to activate the cards on it:

Enter service-mode: * 28 *

Select: **COPIER**
 ↘
 FUNCTION
 ↘
 INSTALL
 ↘
 CARD
 SET CARD ON 1 ! 🗨️

🗨️ **Note:** For the functionality of the cable you have to set this value to "1".

If you have an iR 3100C or iR 6800C you have also to make these additional settings in the service mode:

Select: **COPIER**
 ↘
 OPTION
 ↘
 CARD-SW
 SET CARD-SW on "1"

Now you have to turn off the power of the iR device.

Note:

If you can't enter the service mode of the machine with this combination, please contact your local Canon service department or their professional helpdesk.

Note:

If you haven't set a System Manager ID, you'll probably have problems to enter the RUI of the machine without an ID. Normally you can access the RUI with the department ID "1" and without a password. If you can't access the RUI anymore, please follow the steps on point 4 of this document. Point 4 describes how to deactivate the cards on the iR device. Then you have to start at point 1 of this document again.

2. Attach the ImageRunner cable to the iR device

The cable is plugged to the device with the same connector as the Card Reader C1 from Canon. For technical instructions of how to remove the cover and get the cable of an iR device please refer to the service manual of the appropriate device.

After having successfully attached the cable to the iR device, you can simply plug the D-SUB 15 adapter to the appropriate connector of the MIND box.

Now you can turn on the power of the iR device. When the machine is powered on, the usual picture on the display will be substituted by a picture of the card identification. This indicates a valid attachment of the cable.

Note:

If you attach the cable to an iRC3100, you need another cable set: The ImageRunner cable and an additionally small adapter cable. This cable set is also available at NT-ware under another article number (MCIC3). Please take attention of this when placing an order.

3. Software configurations

a. MIND Settings

The configuration of the MIND software is very easy; you just have to configure the "Device Control" in the MIND Module Status on the uniFLOW terminal site. Set it on "Relay" and the behaviour on "Normal". The settings "Always Locked" or "Always Unlocked" you'll probably never need. These configuration options are available from MIND Software Version **2.9.37** and above.

MIND Module Status:

Serial Number: 12ede
Current Date/Time: 10.07.2004 18:03:47
Software Version: 2.11.40

ID Modul: -
ID Status: -

Name:

Device Control:

ID Module Cfg:

UI Behavior:

UI Language:

Security:

Admin Password:

Confirm:

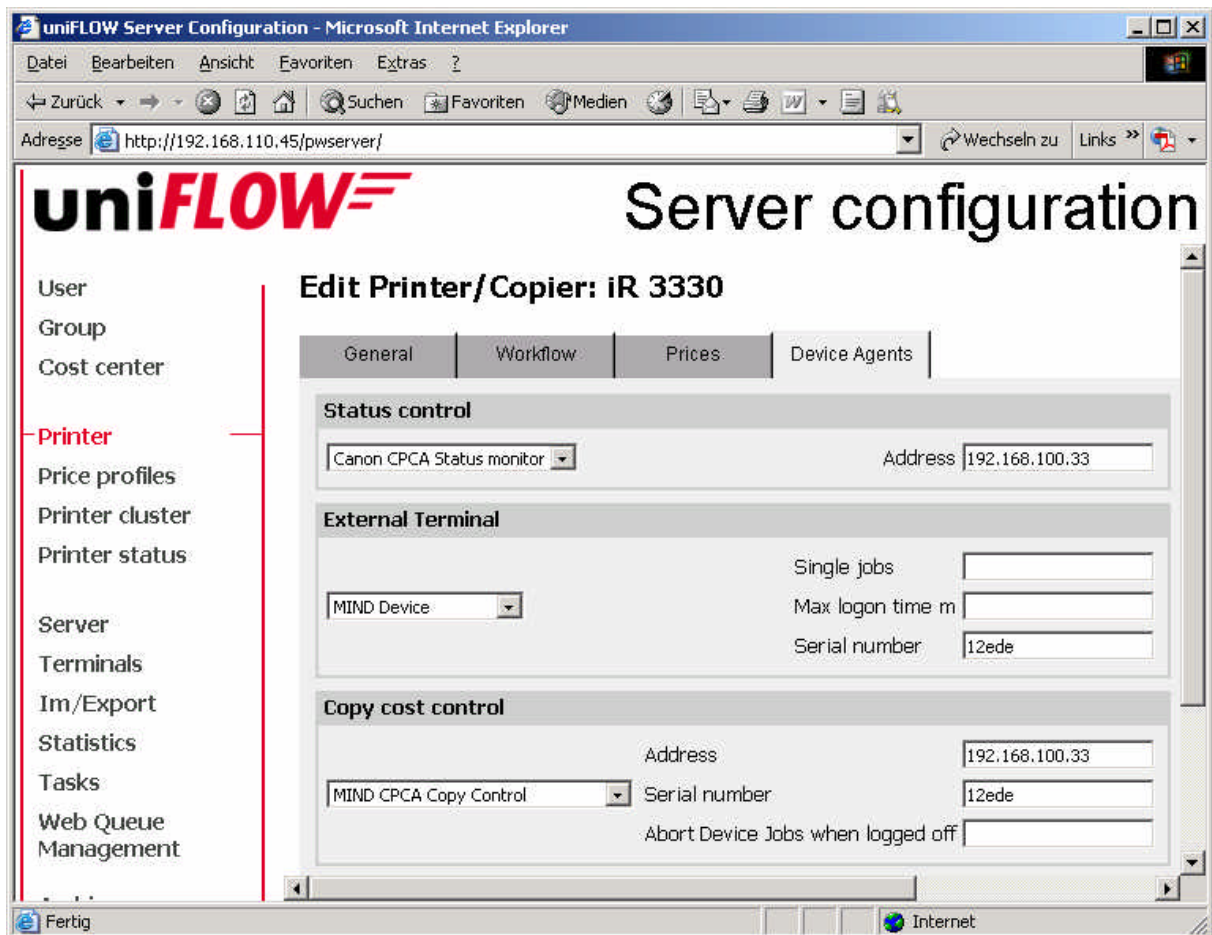
Restrict Access To IP:

Network Config: [Show Details...](#)

NTware
Systemprogrammierung GmbH

b. Device Agent configuration with copy cost control

At the uniFLOW server you have to configure your printer with the known "MIND Device" device agent and its corresponding serial number. Secondly you add the "MIND CPCA Copy Control" device agent only with the IP-address of the iR device and the serial number from the "MIND Device". This device agent is available from uniFLOW kernel **2.0.206** and above.



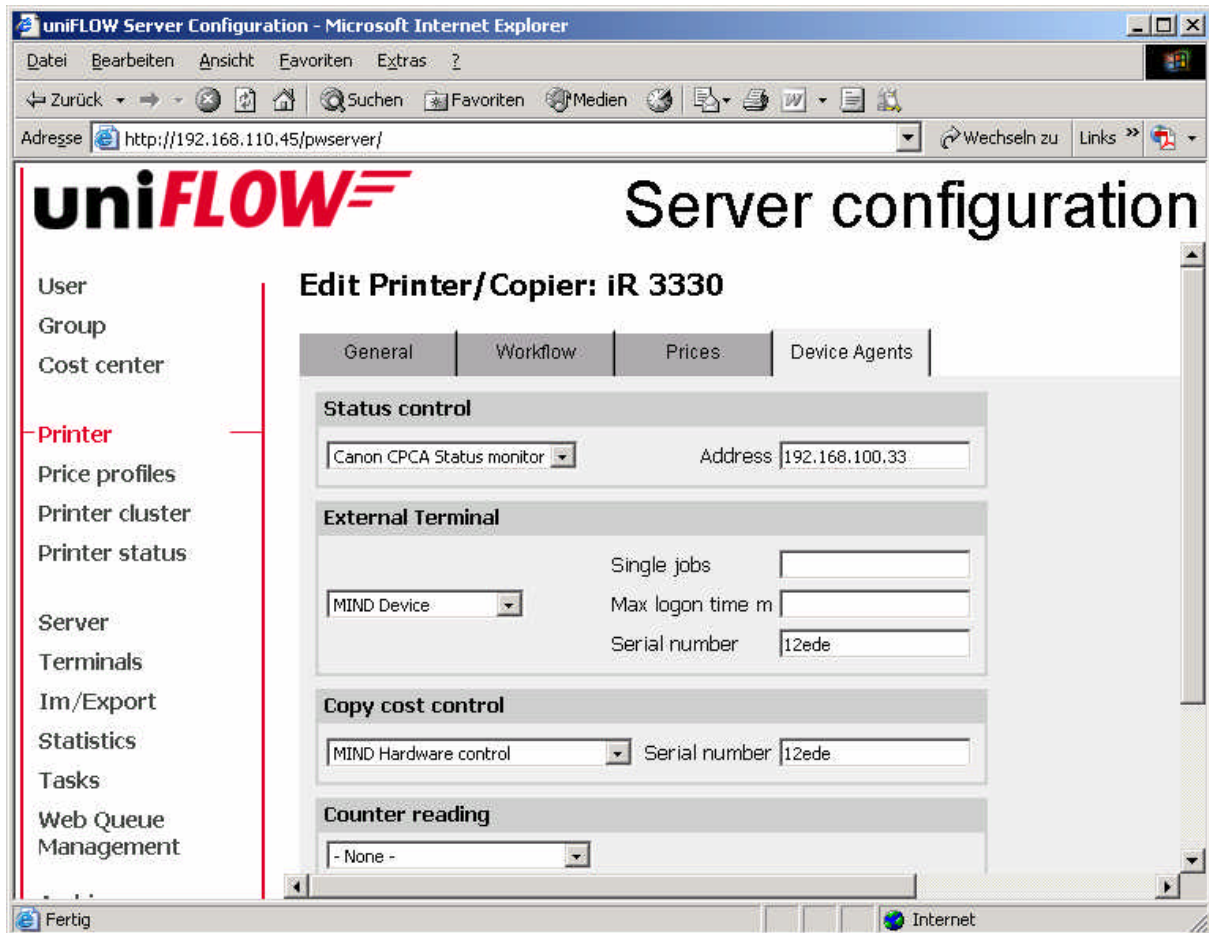
Now you can access the machine only with a valid identification.

Note:

Don't forget to set prices for copies on the configured printer in uniFLOW.

c. Device Agent configuration without copy cost control

If you only need this device for secure printing and not additionally for copy cost control, you can also configure uniFLOW only with the "MIND Hardware control" instead of the MIND CPCA Copy Control. This device agent is available from uniFLOW kernel **1.16.149** and above.



With this configuration of device agents you can use only the "Secure Printing" functionality of uniFLOW, even if you set prices for copies! The information for copy costs are not delivered by the iR device via the cable. The card interface of the iR device only supports the closing and opening mechanism for secure printing, not for acquiring copy clicks.

4. Detach the cable from the iR device

If you want to unplug the cable from an iR device, this small instruction will prevent errors.

First you have to turn off the machine and open it as described in the service manual of the machine. Detach the cable from the machine and close the machine again. Now you can turn it on and normally, the display is set back to standard. If the error-message **719** comes up, you have to select the following:

Enter service-mode: * **28** *

```
Select:  COPIER
          ↵ FUNCTION
          ↵ INSTALL
          ↵  CARD
          SET CARD ON "0"
```

If you have an iRC 3100 or iRC 6800 you have also to make these additional settings in the service mode:

```
Select:  COPIER
          ↵ OPTION
          ↵  CARD-SW
          SET CARD-SW on "0"
```

Go back to the function menu!

```
↵ CLEAR
   ↵ ERR
     Activate
   ↵ CARD
     Activate
```

Now you have to reboot the iR device and you will get the usual display (copy, etc).

Note:

If you still get an error message, please contact your local Canon service department or their professional helpdesk.

Appendix A: List of supported Canon devices

B/W Machines		Color Machines	
Type:	Note:	Type:	Note:
iR 2200		iR 3100C	Needs the MCIC3 cable from NT-ware.
iR 2220			
iR 3300		iRC/CLC 3200	
iR 3320		iR 6800C	
iR 5000	These devices need special adapter cables from Canon. Normally these cables are shipped with the device. Please contact your local service department when they're missing.		
iR 5020			
iR 6000			
iR 6020			
iR 7200			
iR 8500			
iR 105			

Appendix B: Relevant Links for this document

These links for the Device Agents are always up to date and contain more detailed information.

MIND Device: <http://ntwlabib.dnsalias.com/its/browse/MOM-11>

MIND Hardware Control <http://ntwlabib.dnsalias.com/its/browse/MOM-1>

MIND CPCA Copy Control: <http://ntwlabib.dnsalias.com/its/browse/MOM-1255>